

PATIO COURT TOWNHOMES

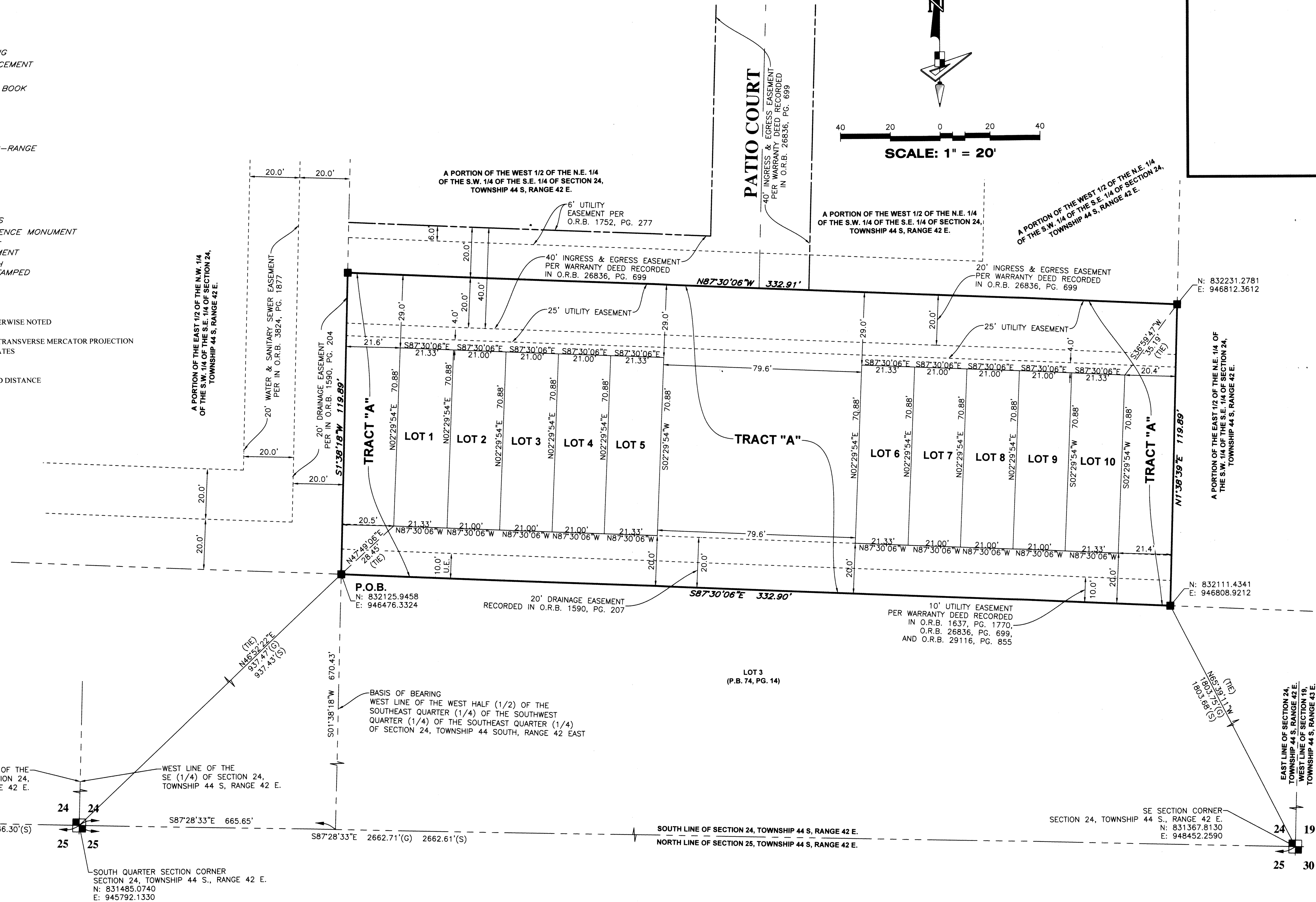
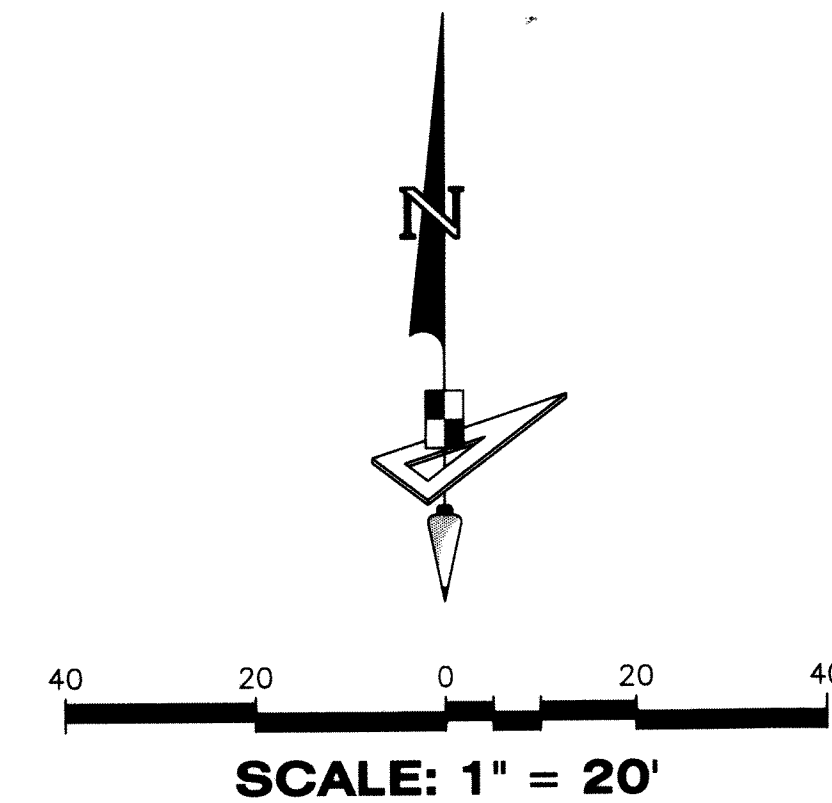
BEING A PORTION OF SECTION 24, TOWNSHIP 44 SOUTH, RANGE 42 EAST,
VILLAGE OF PALM SPRINGS, PALM BEACH COUNTY, FLORIDA.

LEGEND

- P.O.B. ----- POINT OF BEGINNING
- P.O.C. ----- POINT OF COMMENCEMENT
- P.B. ----- PLAT BOOK
- O.R.B. ----- OFFICIAL RECORDS BOOK
- PG./PG(s) ----- PAGE(S)
- R/W ----- RIGHT-OF-WAY
- (G) ----- GRID DISTANCE
- (S) ----- GROUND DISTANCE
- 28-43-43 ----- SECTION-TOWNSHIP-RANGE
- R ----- RADIUS
- L ----- ARC LENGTH
- D ----- DELTA ANGLE
- U.E. ----- UTILITY EASEMENT
- ε ----- CENTER LINE
- LB ----- LICENSED BUSINESS
- PRM ----- PERMANENT REFERENCE MONUMENT
- ----- FOUND PERMANENT REFERENCE MONUMENT
- ----- SET MAG NAIL WITH ALUMINUM DISK STAMPED "PRM LB 7768"

STATE PLANE COORDINATE NOTES:

- a. ALL DISTANCES ARE GROUND UNLESS OTHERWISE NOTED
- b. SCALE FACTOR=1.0000392
- c. COORDINATE SYSTEM = 1983 STATE PLANE TRANSVERSE MERCATOR PROJECTION
COORDINATES SHOWN ARE GRID COORDINATES
- d. ZONE = FLORIDA EAST ZONE
- e. DATUM = NAD 83-1990 ADJUSTMENT
- f. GROUND DISTANCE X SCALE FACTOR = GRID DISTANCE
- g. LINEAR UNIT = U.S. SURVEY FEET
- h. PLAT BEARINGS = GRID BEARINGS
NO ROTATION



EAST LINE OF SECTION 23,
TOWNSHIP 44 S., RANGE 42 E.
WEST LINE OF SECTION 24,
TOWNSHIP 44 S., RANGE 42 E.

23 24
26 25

SW SECTION CORNER
SECTION 24, TOWNSHIP 44 S., RANGE 42 E.
N: 831601.8620
E: 943128.2940

EAST LINE OF THE
SW (1/4) OF SECTION 24,
TOWNSHIP 44 S., RANGE 42 E.

WEST LINE OF THE
SE (1/4) OF SECTION 24,
TOWNSHIP 44 S., RANGE 42 E.

SOUTH QUARTER SECTION CORNER
SECTION 24, TOWNSHIP 44 S., RANGE 42 E.
N: 831485.0740
E: 945792.1330

BASIS OF BEARING
WEST LINE OF THE WEST HALF (1/2) OF THE
SOUTHWEST QUARTER (1/4) OF THE SOUTHWEST
QUARTER (1/4) OF THE SOUTHWEST QUARTER (1/4)
OF SECTION 24, TOWNSHIP 44 SOUTH, RANGE 42 EAST

SOUTH LINE OF SECTION 24, TOWNSHIP 44 S., RANGE 42 E.
NORTH LINE OF SECTION 25, TOWNSHIP 44 S., RANGE 42 E.

SE SECTION CORNER
SECTION 24, TOWNSHIP 44 S., RANGE 42 E.
N: 831367.8130
E: 948452.2590

EAST LINE OF SECTION 24,
TOWNSHIP 44 S., RANGE 42 E.
WEST LINE OF SECTION 19,
TOWNSHIP 44 S., RANGE 42 E.

24 19
25 30

THIS INSTRUMENT WAS PREPARED BY
LUIS J. ORTIZ, P.S.M.
LS7006 STATE OF FLORIDA.
GEOPOINT SURVEYING, INC.
4152 WEST BLUE HERON BOULEVARD, SUITE 105,
RIVIERA BEACH, FLORIDA 33404.
CERTIFICATE OF AUTHORIZATION NO. LB7768



4152 W. Blue Heron Blvd.
Suite 105
Riviera Beach, FL 33404
Phone: (561) 444-2720
www.geopointsurvey.com
Licensed Business Number LB 7768